

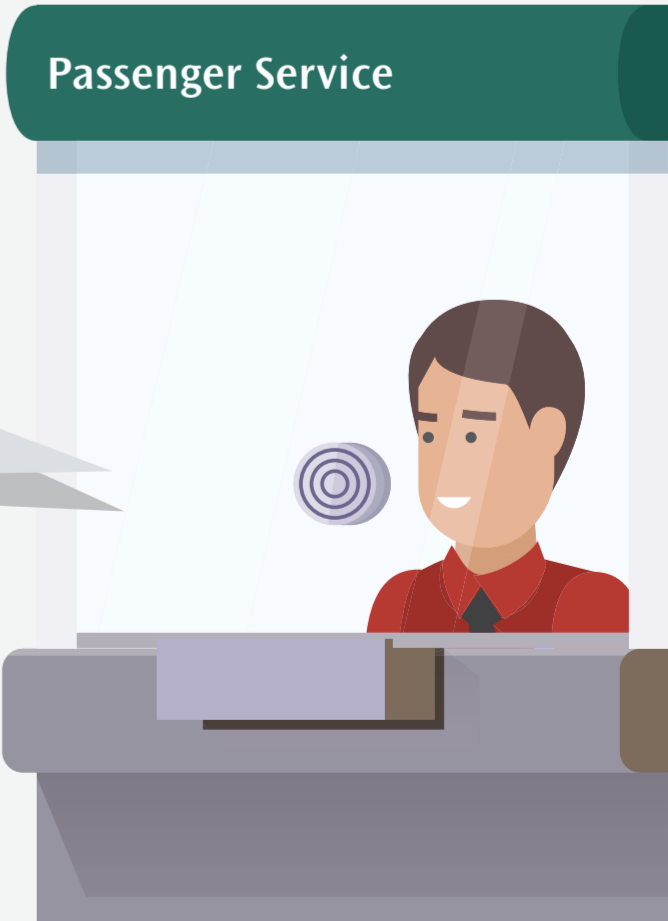
CHANGES TO **EWL** AND **NSL** OPERATING HOURS IN DECEMBER 2017

19 AFFECTED STATIONS

- EW33 Tuas Link
- EW32 Tuas West Road
- EW31 Tuas Crescent
- EW30 Gul Circle
- EW29 Joo Koon
- EW28 Pioneer
- EW27 Boon Lay
- EW26 Lakeside
- EW25 Chinese Garden
- NS3 Bukit Gombak
- NS2 Bukit Batok
- EW24 NS1 Jurong East
- EW23 Clementi
- EW22 Dover
- EW21 Buona Vista
- EW20 Commonwealth
- EW19 Queenstown
- EW18 Redhill
- EW17 Tiong Bahru

FRIDAYS	SATURDAYS	SUNDAYS
8 Early Closure 2300h (usually 0030h)	9 Late Opening 0800h (usually 0530h)	10 Closure Full-Day 
15 Early Closure 2300h (usually 0030h)	16 Late Opening 0800h (usually 0530h)	17 Closure Full-Day 
22 Early Closure 2300h (usually 0030h)	23 Late Opening 0800h (usually 0530h)	24 Late Opening 0800h (usually 0530h)
29 Early Closure 2300h (usually 0030h)	30 Late Opening 0800h (usually 0530h)	31 Late Opening 0800h (usually 0530h)

Please approach the **Passenger Service Centre** at MRT stations for assistance with the train timings and shuttle bus arrangements.



CHANGES TO EWL AND NSL OPERATING HOURS IN DECEMBER 2017

2017年12月东西线和南北线列车服务时间变更

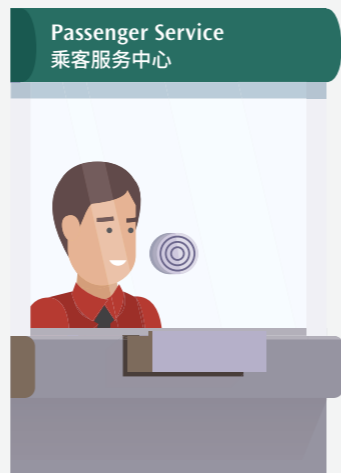
DECEMBER 2017
2017年12月



19 AFFECTED STATIONS 19个受影响地铁站

Please approach the **Passenger Service Centre** at MRT stations for assistance with the train timings and shuttle bus arrangements.

请向地铁站内乘客服务中心的工作人员咨询具体的列车服务时间和接驳巴士安排。



- EW33 Tuas Link
- EW32 Tuas West Road
- EW31 Tuas Crescent
- EW30 Gul Circle
- EW29 Joo Koon
- EW28 Pioneer
- EW27 Boon Lay
- EW26 Lakeside
- EW25 Chinese Garden
- NS3 Bukit Gombak
- NS2 Bukit Batok
- EW24 NS1 Jurong East
- EW23 Clementi
- EW22 Dover
- EW21 Buona Vista
- EW20 Commonwealth
- EW19 Queenstown
- EW18 Redhill
- EW17 Tiong Bahru

FRIDAYS 星期五

SATURDAYS 星期六

SUNDAYS 星期天

FRIDAYS 星期五	SATURDAYS 星期六	SUNDAYS 星期天
8 Early Closure 11.00pm (usually 12.30am) 提早结束 晚上11.00 (通常为凌晨12.30)	9 Late Opening 8.00am (usually 5.30am) 延迟开始 早上8.00 (通常为早上5.30)	10 Early Closure 11.00pm (usually 12.30am) 提早结束 晚上11.00 (通常为凌晨12.30)
15 Early Closure 11.00pm (usually 12.30am) 提早结束 晚上11.00 (通常为凌晨12.30)	16 Late Opening 8.00am (usually 5.30am) 延迟开始 早上8.00 (通常为早上5.30)	17 Closure Full-Day 全天 停止服务
22 Early Closure 11.00pm (usually 12.30am) 提早结束 晚上11.00 (通常为凌晨12.30)	23 Late Opening 8.00am (usually 5.30am) 延迟开始 早上8.00 (通常为早上5.30)	24 Late Opening 8.00am (usually 5.30am) 延迟开始 早上8.00 (通常为早上5.30)
29 Early Closure 11.00pm (usually 12.30am) 提早结束 晚上11.00 (通常为凌晨12.30)	30 Late Opening 8.00am (usually 5.30am) 延迟开始 早上8.00 (通常为早上5.30)	31 Late Opening 8.00am (usually 5.30am) 延迟开始 早上8.00 (通常为早上5.30)

PERUBAHAN WAKTU OPERASI EWL DAN NSL PADA DISEMBER 2017

டிசம்பர் 2017-ல் கிழக்கு மேற்கு மற்றும் வடக்கு தெற்கு வழி இரயில்களின் இயங்கும் நேர மாற்றங்கள்

DISEMBER 2017
டிசம்பர் 2017



19 STESEN YANG TERJEJAS 19 பாதிக்கப்படும் நிலையங்கள்

Sila rujuk ke **Pusat Khidmat Pelanggan** kami di stesen MRT untuk maklumat lanjut mengenai jadual perjalanan kereta api dan perkhidmatan bas ulang-alik.

ரயில் நேரங்கள் மற்றும் இடைவழிப் பேருந்து ஏற்பாடுகள் பற்றிய உதவிகளுக்குப் பெருவிரைவு (எம்ஆர்டி) ரயில் நிலையங்களில் உள்ள பயணிகள் சேவை மையத்தைத் தயவுசெய்து அணுகவும்.



Pusat Khidmat Pelanggan
பயணிகள் சேவை

- EW33 Tuas Link
- EW32 Tuas West Road
- EW31 Tuas Crescent
- EW30 Gul Circle
- EW29 Joo Koon
- EW28 Pioneer
- EW27 Boon Lay
- EW26 Lakeside
- EW25 Chinese Garden
- NS3 Bukit Gombak
- NS2 Bukit Batok
- EW24 NS1 Jurong East
- EW23 Clementi
- EW22 Dover
- EW21 Buona Vista
- EW20 Commonwealth
- EW19 Queenstown
- EW18 Redhill
- EW17 Tiong Bahru

JUMAAT வெள்ளிக்கிழமைகள்	SABTU சனிக்கிழமைகள்	AHAD ஞாயிறுக்கிழமைகள்
8 Penutupan Awal 11.00 malam (Biasa 12.30 pagi) சீக்கிரமாக மூடுதல் மாலை 11.00 (வழக்கமாக காலை 12.30)	9 Pembukaan Lewat 8.00 pagi (Biasa 5.30 pagi) தாமதமாகத் திறத்தல் காலை 8.00 (வழக்கமாக காலை 5.30)	10 Penutupan Awal 11.00 malam (Biasa 12.30 pagi) சீக்கிரமாக மூடுதல் மாலை 11.00 (வழக்கமாக காலை 12.30)
15 Penutupan Awal 11.00 malam (Biasa 12.30 pagi) சீக்கிரமாக மூடுதல் மாலை 11.00 (வழக்கமாக காலை 12.30)	16 Pembukaan Lewat 8.00 pagi (Biasa 5.30 pagi) தாமதமாகத் திறத்தல் காலை 8.00 (வழக்கமாக காலை 5.30)	17 Penutupan Awal 11.00 malam (Biasa 12.30 pagi) சீக்கிரமாக மூடுதல் மாலை 11.00 (வழக்கமாக காலை 12.30)
22 Penutupan Awal 11.00 malam (Biasa 12.30 pagi) சீக்கிரமாக மூடுதல் மாலை 11.00 (வழக்கமாக காலை 12.30)	23 Pembukaan Lewat 8.00 pagi (Biasa 5.30 pagi) தாமதமாகத் திறத்தல் காலை 8.00 (வழக்கமாக காலை 5.30)	24 Pembukaan Lewat 8.00 pagi (Biasa 5.30 pagi) தாமதமாகத் திறத்தல் காலை 8.00 (வழக்கமாக காலை 5.30)
29 Penutupan Awal 11.00 malam (Biasa 12.30 pagi) சீக்கிரமாக மூடுதல் மாலை 11.00 (வழக்கமாக காலை 12.30)	30 Pembukaan Lewat 8.00 pagi (Biasa 5.30 pagi) தாமதமாகத் திறத்தல் காலை 8.00 (வழக்கமாக காலை 5.30)	31 Pembukaan Lewat 8.00 pagi (Biasa 5.30 pagi) தாமதமாகத் திறத்தல் காலை 8.00 (வழக்கமாக காலை 5.30)

SHUTTLE 1

OUTRAM PARK – JURONG EAST (BOTH BOUNDS)

EAST-WEST LINE

Every Friday, Saturday & Sunday from
8 Dec 2017 to 31 Dec 2017

Shuttle 1 will serve the following bus stops:

▶ East Bound
◀ West Bound

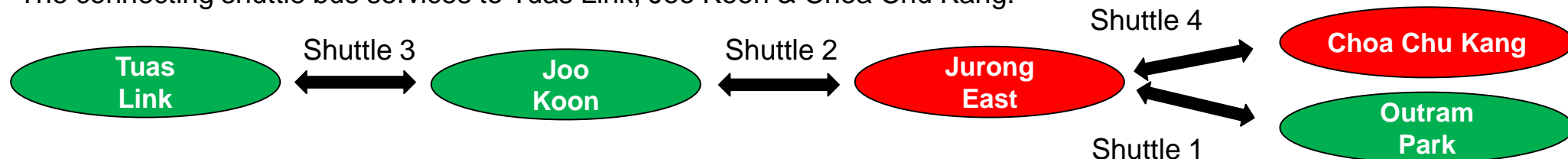
Jurong East Temp Int BS 28009	Clementi Stn Exit B BS 17179	Dover Stn Exit B BS 19039	Buona Vista Stn Exit C BS 11361	Commonwealth Stn Exit B/C BS 11169	Queenstown Stn Exit B/C BS 11149	Redhill Stn BS 10209	Tiong Bahru Plaza BS10169	Outram Park Stn BS 06029
Jurong East	Clementi	Dover	Buona Vista	Commonwealth	Queenstown	Redhill	Tiong Bahru	Outram Park
Jurong East Temp Int BS 28009	Clementi Stn Exit A BS 17171	Dover Stn Exit A BS 19031	Buona Vista Stn Exit D BS 11369	Commonwealth Stn Exit A/D BS 11161	Queenstown Stn Exit A/D BS 11141	Opp Redhill Stn BS 10201	Opp Tiong Bahru Plaza BS 10161	Outram Park Stn Exit F/SGH BS 10018

Arrival Time of First & Last Bus at Bus Stops on Days Of Early Closure, Late Opening & Full-Day Closure

From	Fridays & Saturdays (Early Closure at 11pm)				Saturdays & Sundays (Late Opening from 8am)				Sundays (Full-Day Closure on 10 Dec & 17 Dec)			
	Towards Outram Park		Towards Jurong East		Towards Outram Park		Towards Jurong East		Towards Outram Park		Towards Jurong East	
	First Bus	Last Bus	First Bus	Last Bus	First Bus	Last Bus	First Bus	Last Bus	First Bus	Last Bus	First Bus	Last Bus
Jurong East	11.00pm	1.27am	-	5.43am	8.00am	-	8.00am	5.43am	1.27am	-	-	
Clementi		1.38am	12.40am	5.38am		6.21am		5.38am	1.38am	6.21am	12.40am	
Dover		1.44am	12.33am	5.40am		6.18am		5.40am	1.44am	6.18am	12.33am	
Buona Vista		1.51am	12.29am	5.43am		6.16am		5.43am	1.51am	6.16am	12.29am	
Commonwealth		1.55am	12.25am	5.45am		6.13am		5.45am	1.55am	6.13am	12.25am	
Queenstown		1.59am	12.20am	5.46am		6.11am		5.46am	1.59am	6.11am	12.20am	
Redhill		2.03am	12.16am	5.49am		6.09am		5.49am	2.03am	6.09am	12.16am	
Tiong Bahru		2.08am	12.11am	5.51am		6.07am		5.51am	2.08am	6.07am	12.11am	
Outram Park		-	12.04am	-		6.04am		-	-	6.04am	12.04am	

Information on Shuttle Bus Service

- The connecting shuttle bus services to Tuas Link, Joo Koon & Choa Chu Kang:



- Commuters planning to connect to train services at Outram Park and Choa Chu Kang MRT station are advised to check train services timings.
- Shuttle 1 between Outram Park Station and Jurong East Station (both bounds)
 - Early Closure for these stations on Fridays and Saturdays at 11pm
 - Late Opening on Saturdays and Sundays at 8am
 - Full-Day Closure for these stations on Sunday, 10 Dec & 17 Dec
- The shuttle bus services will follow the same fare structure as trains
- Frequencies of the shuttle bus services are 3 – 5 minutes (peak), and 5 – 10 minutes (off-peak)



Information is correct at time of print.

For information on shuttle bus services, please contact the SMRT Customer Hotline at 1800-336-8900 from 7.30am to 8.00pm daily. Passengers may also approach the service staff on site or visit www.smrt.com.sg for more details.

SHUTTLE 2

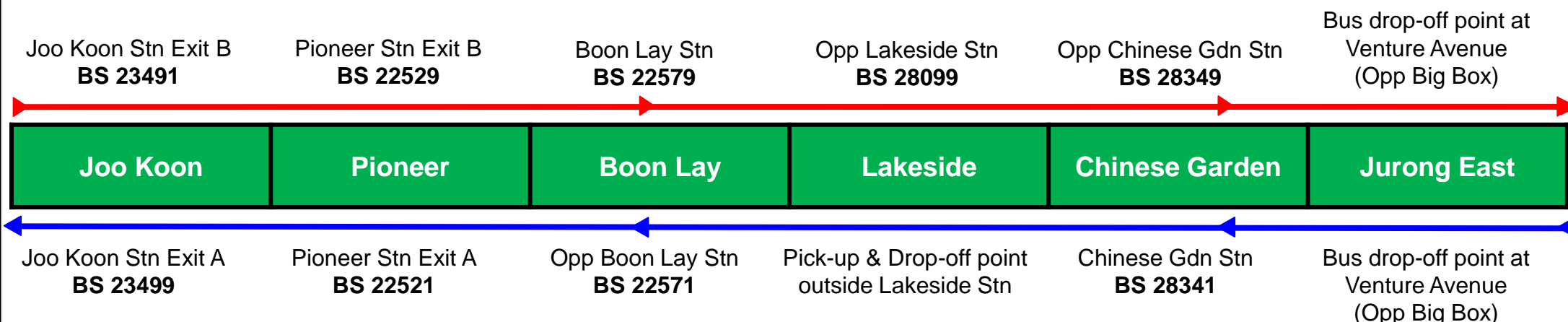
JURONG EAST – JOO KOON (BOTH BOUNDS)

EAST-WEST LINE

Every Friday, Saturday & Sunday from
8 Dec 2017 to 31 Dec 2017

Shuttle 2 will serve the following bus stops:

▶ East Bound
◀ West Bound

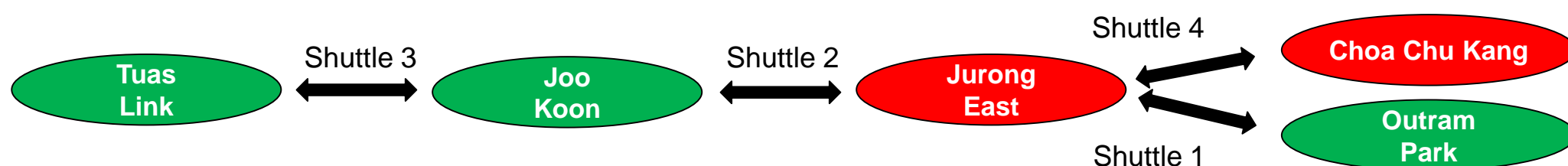


Arrival Time of First & Last Bus at Bus Stops on Days Of Early Closure, Late Opening & Full-Day Closure

From	Fridays & Saturdays (Early Closure at 11pm)				Saturdays & Sundays (Late Opening from 8am)				Sundays (Full-Day Closure on 10 Dec & 17 Dec)			
	Towards Jurong East		Towards Joo Koon		Towards Jurong East		Towards Joo Koon		Towards Jurong East		Towards Joo Koon	
	First Bus	Last Bus	First Bus	Last Bus	First Bus	Last Bus	First Bus	Last Bus	First Bus	Last Bus	First Bus	Last Bus
Joo Koon	11.00pm	11.48pm	11.00pm	-	5.31am	8.00am	-	8.00am	5.31am	11.48pm	-	-
Pioneer		11.55pm		1.56am	5.34am		5.23am		5.34am	11.55pm	5.23am	1.56am
Boon Lay		12.00am		1.51am	5.36am		5.21am		5.36am	12.00am	5.21am	1.51am
Lakeside		12.06am		1.46am	5.38am		5.19am		5.38am	12.06am	5.19am	1.46am
Chinese Garden		12.10am		1.42am	5.40am		5.17am		5.40am	12.10am	5.17am	1.42am
Jurong East		-		1.32am	-		5.14am		-	-	5.14am	1.32am

Information on Shuttle Bus Service

- The connecting shuttle bus services to Tuas Link, Choa Chu Kang & Outram Park:



- Commuters planning to connect to train services at Outram Park and Choa Chu Kang MRT station are advised to check train services timings, as the shuttle bus service may not connect to the last train departing the station
- Shuttle 2 between Jurong East Station and Joo Koon Station (both bounds)
 - Early Closure for these stations on Fridays and Saturdays at 11pm
 - Late Opening on Saturdays and Sundays at 8am
 - Full-Day Closure for these stations on Sunday, 10 Dec & 17 Dec
- The shuttle bus services will follow the same fare structure as trains
- Frequencies of shuttle bus service are 3 – 5 minutes (peak), and 5 – 10 minutes (off-peak)



Information is correct at time of print.

For information on shuttle bus services, please contact the SMRT Customer Hotline at 1800-336-8900 from 7.30am to 8.00pm daily. Passengers may also approach the service staff on site or visit www.smrt.com.sg for more details.

SHUTTLE 3

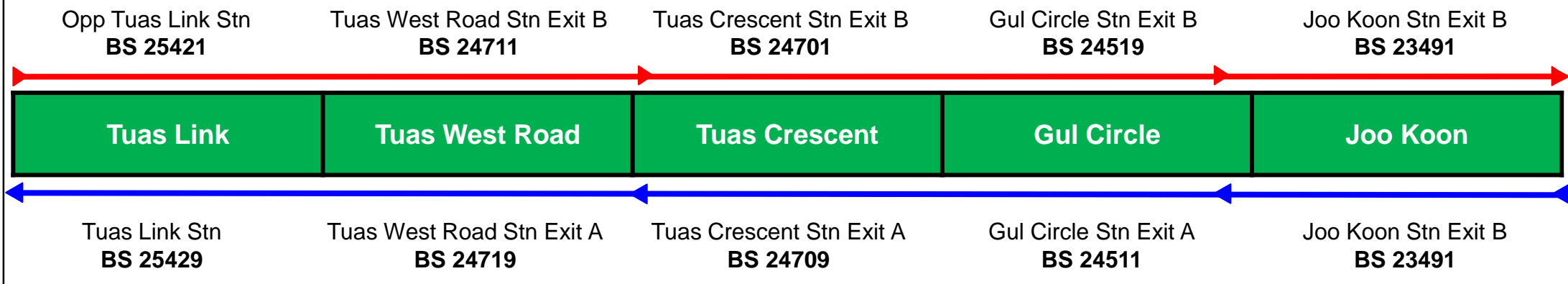
TUAS LINK– JOO KOON (BOTH BOUNDS)

EAST-WEST LINE

Every Friday, Saturday & Sunday from
8 Dec 2017 to 31 Dec 2017

Shuttle 3 will serve the following bus stops:

▶ East Bound
◀ West Bound

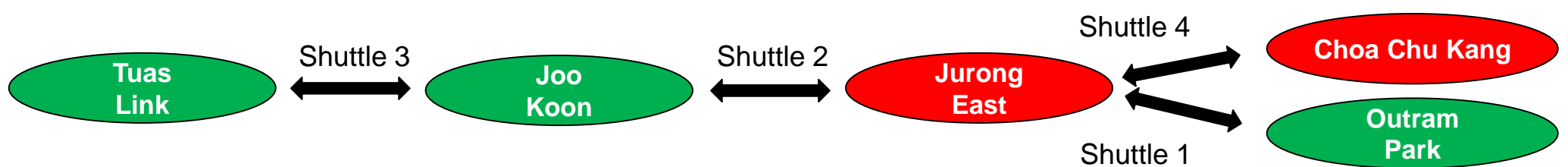


Arrival Time of First & Last Bus at Bus Stops on Days Of Early Closure, Late Opening & Full-Day Closure

From	Fridays & Saturdays (Early Closure at 11pm)				Saturdays & Sundays (Late Opening from 8am)				Sundays (Full-Day Closure on 10 Dec & 17 Dec)			
	Towards Tuas Link		Towards Joo Koon		Towards Tuas Link		Towards Joo Koon		Towards Tuas Link		Towards Joo Koon	
	First Bus	Last Bus	First Bus	Last Bus	First Bus	Last Bus	First Bus	Last Bus	First Bus	Last Bus	First Bus	Last Bus
Tuas Link	-	-	11.20pm	-	-	-	5.19am	-	-	-	5.19am	11.20pm
Tuas West Road	10.40pm	2.26am	11.24pm	5.34am	8.00am	5.21am	8.00am	5.34am	2.26am	5.21am	11.24pm	
Tuas Crescent	10.40pm	2.21am	11.29pm	5.32am	8.00am	5.23am	8.00am	5.32am	2.21am	5.23am	11.29pm	
Gul Circle	10.40pm	2.15am	11.35pm	5.30am	8.00am	5.26am	8.00am	5.30am	2.15am	5.26am	11.35pm	
Joo Koon	10.40pm	2.05am	-	5.27am	8.00am	-	8.00am	5.27am	2.05am	-	-	

Information on Shuttle Bus Service

- The connecting shuttle bus services to Jurong East, Choa Chu Kang & Outram Park:



- Commuters planning to connect to train services at Outram Park and Choa Chu Kang MRT station are advised to check train services timings, as the shuttle bus service may not connect to the last train departing the station
- Shuttle 3 between Tuas Link Station and Joo Koon Station (both bounds)
 - Early Closure for these stations on Fridays and Saturdays at 10.40pm
 - Late Opening on Saturdays and Sundays at 8am
 - Full-Day Closure for these stations on Sunday, 10 Dec & 17 Dec
- The shuttle bus services will follow the same fare structure as trains
- Frequencies of the shuttle bus services are 3 – 5 minutes (peak), and 5 – 10 minutes (off-peak)



Information is correct at time of print.

For information on shuttle bus services, please contact the SMRT Customer Hotline at 1800-336-8900 from 7.30am to 8.00pm daily. Passengers may also approach the service staff on site or visit www.smrt.com.sg for more details.

SHUTTLE 4

JURONG EAST – CHOA CHU KANG (BOTH BOUNDS)

NORTH-SOUTH LINE

Every Friday, Saturday & Sunday from
8 Dec 2017 to 31 Dec 2017

Shuttle 4 will serve the following bus stops:

▶ Towards Choa Chu Kang
◀ Towards Jurong East

Opp the JTC Summit
BS 28201

Bt Batok Int
BS 43009

Opp Bt Gombak Stn
BS 43571

Opp Choa Chu Kang Stn
BS 44531

Jurong East

Bukit Batok

Bukit Gombak

Choa Chu Kang

Opp the JTC Summit
BS 28201

Bt Batok Int
BS 43009

Bt Gombak Stn
BS 43579

Choa Chu Kang Int
BS 44009

Arrival Time of First & Last Bus at Bus Stops on Days Of Early Closure & Late Opening on Fridays & Saturdays

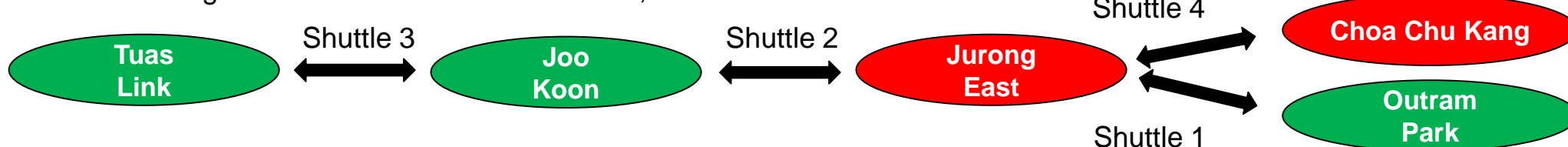
From	Fridays & Saturdays (Early Closure at 11pm)				Saturdays (Late Opening from 8am)			
	Towards Choa Chu Kang		Towards Jurong East		Towards Choa Chu Kang		Towards Jurong East	
	First Bus	Last Bus	First Bus	Last Bus	First Bus	Last Bus	First Bus	Last Bus
Jurong East	11.00pm	12.55am	11.00pm	-	5.16am	8.00am	-	8.00am
Bukit Batok		1.04am		1.14am	5.19am		5.45am	
Bukit Gombak		1.09am		1.04am	5.21am		5.43am	
Choa Chu Kang		-		12.49am	-		5.40am	

Arrival Time of First & Last Bus at Bus Stops on Days Of Late Opening & Full-Day Closure on Sundays

From	Sundays (Late Opening from 8am)				Sundays (Full-Day Closure on 10 Dec & 17 Dec)			
	Towards Choa Chu Kang		Towards Jurong East		Towards Choa Chu Kang		Towards Jurong East	
	First Bus	Last Bus	First Bus	Last Bus	First Bus	Last Bus	First Bus	Last Bus
Jurong East	5.35am	8.00am	-	8.00am	5.35am	12.55am	-	-
Bukit Batok	5.38am		6.08am		5.38am	1.04am	6.08am	1.14am
Bukit Gombak	5.40am		6.06am		5.40am	1.09am	6.06am	1.04am
Choa Chu Kang	-		6.03am		-	-	6.03am	12.49am

Information on Shuttle Bus Service

- The connecting shuttle bus services to Tuas Link, Joo Koon & Outram Park:



- Commuters planning to connect to train services at Outram Park and Choa Chu Kang MRT station are advised to check train services timings, as the shuttle bus service may not connect to the last train departing the station
- Shuttle 4 between Jurong East Station and Choa Chu Kang Station (both bounds)
 - Early Closure for these stations on Fridays and Saturdays at 11pm
 - Late Opening on Saturdays and Sundays at 8am
 - Full-Day Closure for these stations on Sunday, 10 Dec & 17 Dec
- The shuttle bus services will follow the same fare structure as trains
- Frequencies of the shuttle bus services are 3 – 5 minutes (peak), and 5 – 10 minutes (off-peak)



Information is correct at time of print.

For information on shuttle bus services, please contact the SMRT Customer Hotline at 1800-336-8900 from 7.30am to 8.00pm daily. Passengers may also approach the service staff on site or visit www.smrt.com.sg for more details.