



Somerset Station Information Kit

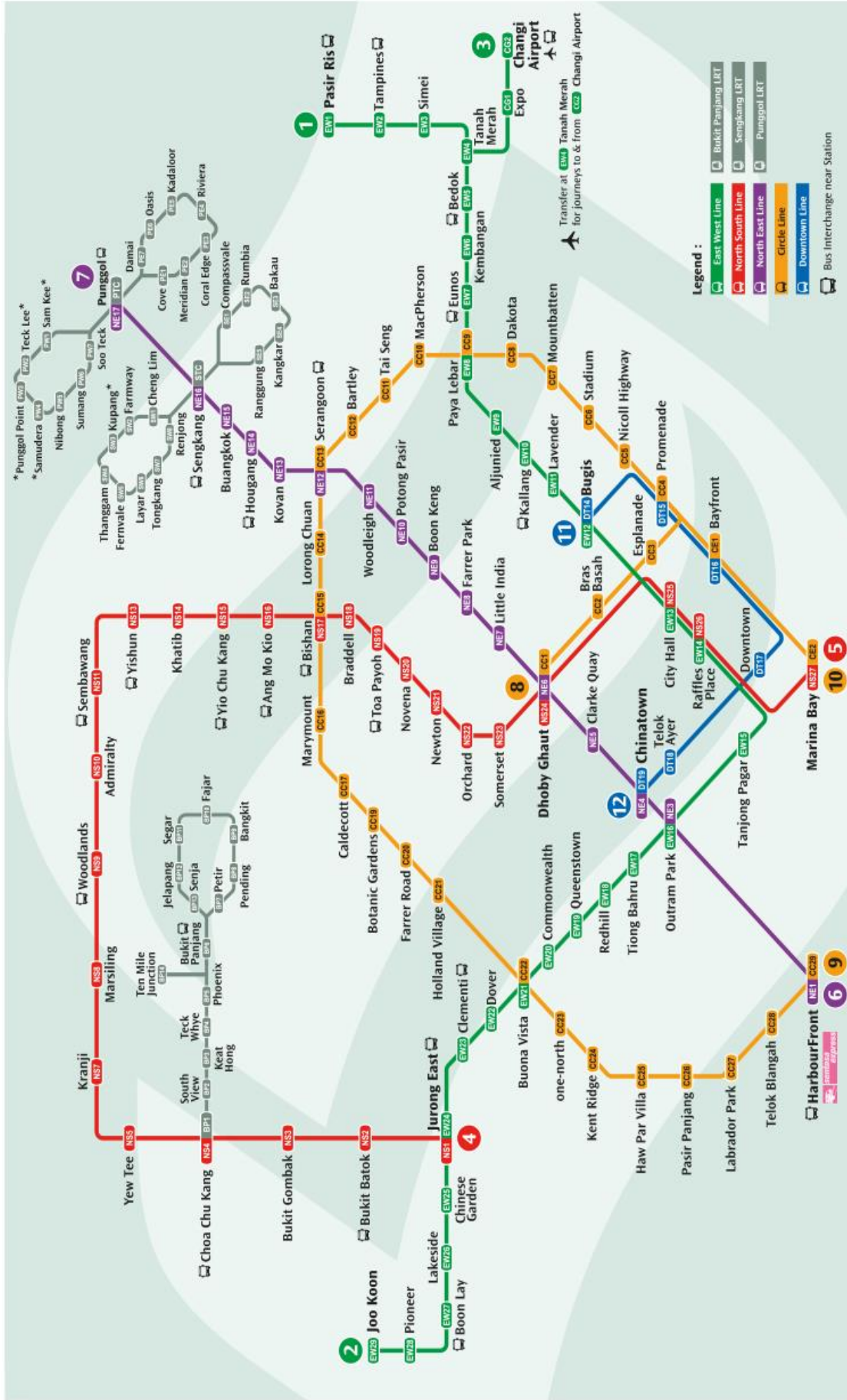
Version 2.0
November 2014

Table of Content

Table of Content	Page
A. General	
- Table of Content	2
- System map	3
B. Station Information	
- Station Contacts & Overview	4
- Taxi & General Contacts	5
- Station Layout	6-7
- Locality Map	8
- Bus Services (By Bus Stop)	9
- Places of Interest	10
- Train Service Disruption Leaflet	11-14



System map



- Legend :**
- East West Line
 - North South Line
 - North East Line
 - Circle Line
 - Downtown Line
 - Bukit Panjang LRT
 - Sengkang LRT
 - Punggol LRT

Note :
 Please board the Sentosa Express at VivoCity Lobby L, Level 3

FOOTNOTE:
 * Denote station which is currently not in operation along existing lines.

Station Overview

Station Contact Points	Contacts
Duty SM Hand phone	9233 1263
Passenger Service Center	6767 3305

EXIT:

Exit A: Exeter Rd, Comcentre, TripleOne Somerset

Exit B: 313@Somerset, Orchard Rd

LIFT:

Lift 1: Concourse free area to exit B

Lift 2: Concourse free area to Exit A

Lift 3: Platform to concourse paid area

PLATFORM

Northbound towards Jurong East, Line 4 - Platform A

Southbound towards Marina Bay / Marina South Pier,
Line 5 – Platform B

Taxi & General Contacts

Nearby Taxi Stand	Road	Via
313 Somerset	Somerset Rd	Exit B
The Centrepont	Orchard Rd	Exit B

Taxi Services	Booking number
SMRT Taxis	6555 8888
Comfort & City Cab	6552 1111
Trans Cab	6555 3333
Premier Taxis	6363 6888

Hotline	Contact
SMRT Hotline	1800 336 8900
SMRT Press Contact	9822 0902
TransitLink Hotline	1800 225 5663
Transcom Hotline	1800 842 0000

SMRT Online Feedback: www.smrt.com.sg/feedback.aspx

Notices and manpower deployment at Concourse

SOMERSET STATION

SOM Concourse level: 2 stn staff/ 2 CST
 PSC – 1 stn staff (denote in circle)
 Concourse Paid 1 stn staff
 Concourse Free 1 CST
 Info Booth/GTM 1 CST

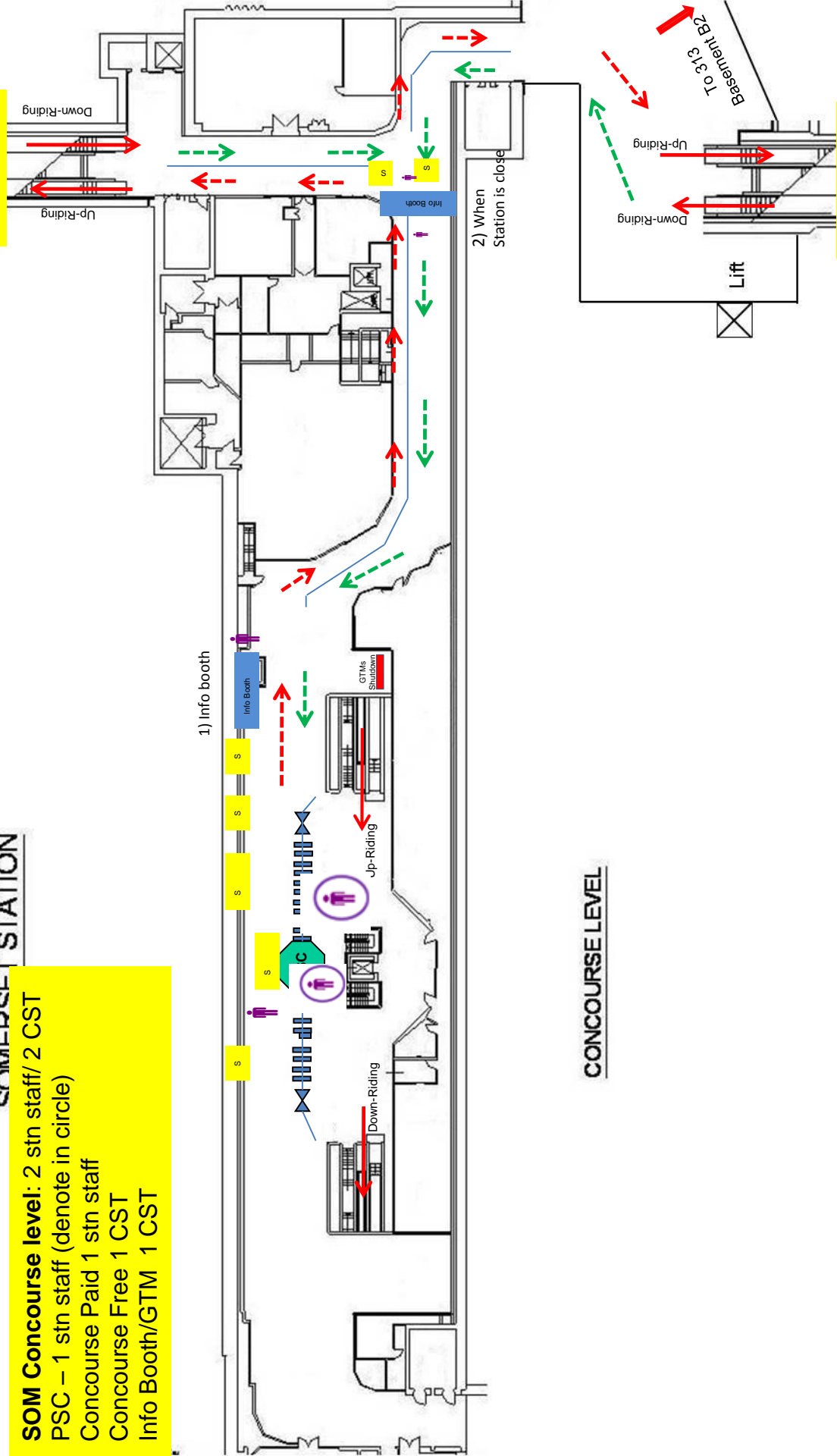
1) Info booth

2) When Station is close

CONCOURSE LEVEL

EXIT A
 Exeter Rd
 (Bus Q-Point F2
 and Taxi
 Q-Point)

EXIT B
 Orchard Rd
 (Bus Q-Point F3)



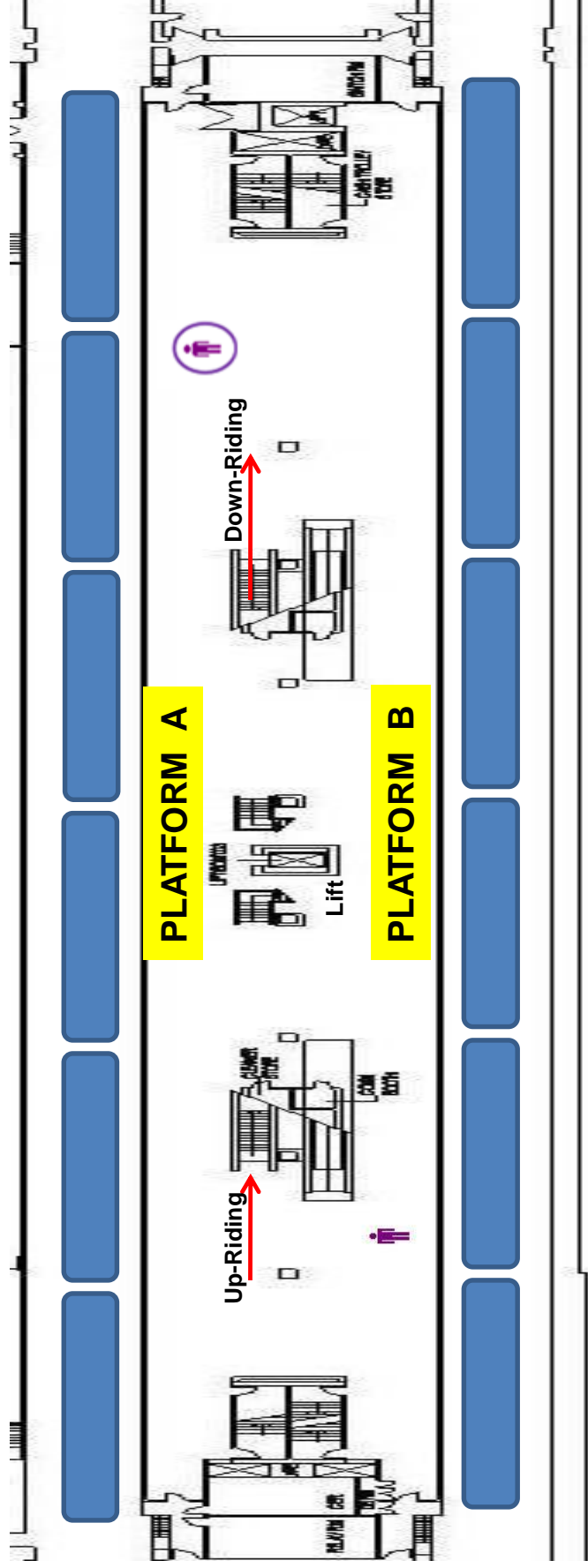
Notices and manpower deployment at Platform

SOM Platform level

Total 1 stn staff / 1 CST

SOMERSET STATION

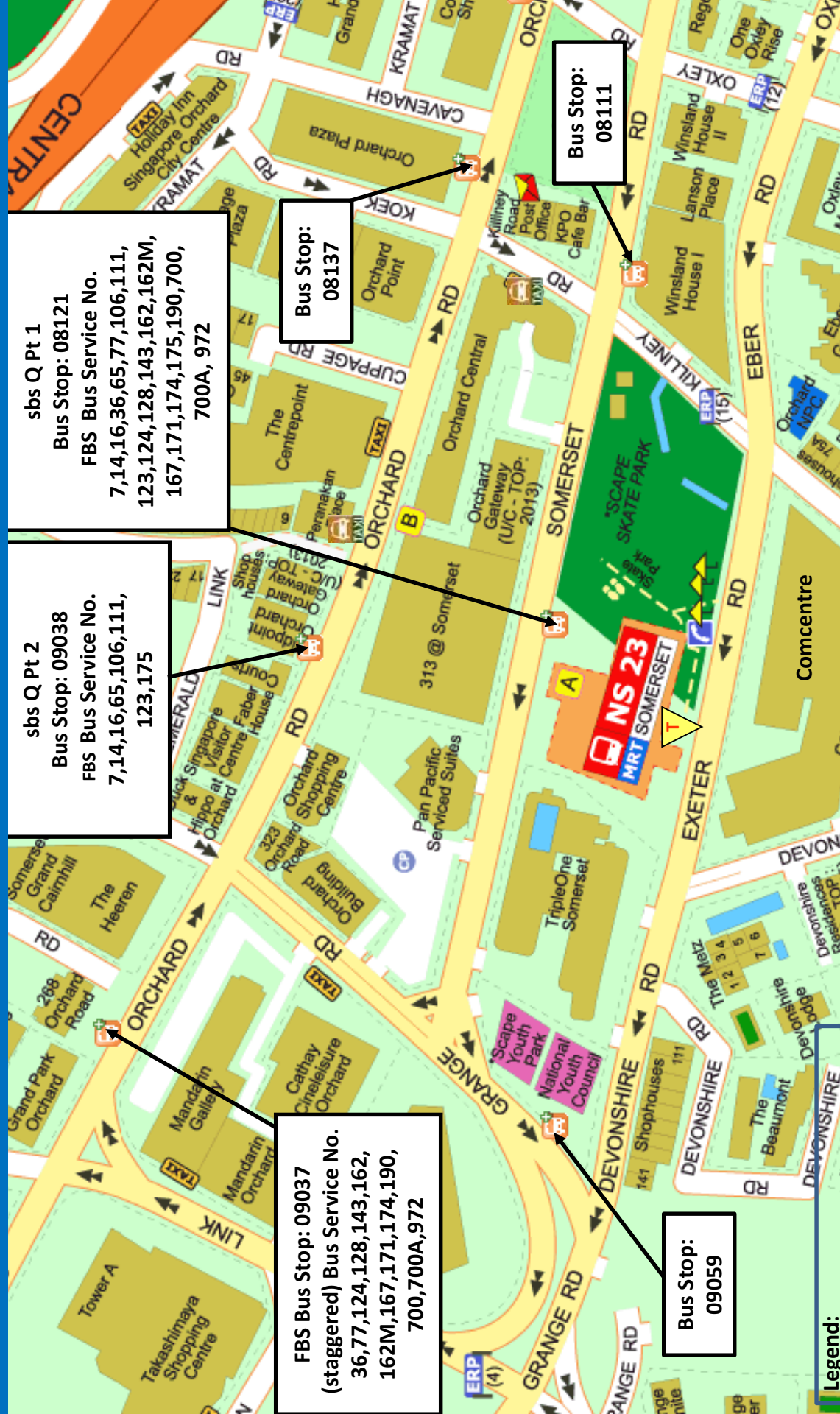
NORTH BOUND - towards YIS / JUR



SOUTH BOUND - towards MRB/MSP

PLATFORM LEVEL

Locality Map



sbs Q Pt 1
 Bus Stop: 08121
 FBS Bus Service No.
 7,14,16,36,65,77,106,111,
 123,124,128,143,162,162M,
 167,171,174,175,190,700,
 700A, 972

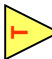
sbs Q Pt 2
 Bus Stop: 09038
 FBS Bus Service No.
 7,14,16,65,106,111,
 123,175

Bus Stop:
 08137

Bus Stop:
 08111

FBS Bus Stop: 09037
 (staggered) Bus Service No.
 36,77,124,128,143,162,
 162M,167,171,174,190,
 700,700A,972

Bus Stop:
 09059

Legend:
 FBS = free regular bus service
 sbs = free shuttle bus service
 = Special Taxi Pick Up Point

sbs Q Pt: Q Pt 1 at Bus Stop 08121 - towards Jurong East (North Bound)

Q Pt 2 at Bus Stop 09038 - towards Marina Bay / Marina South Pier (South Bound)

Bus Services (By Bus Stop)

FREE Bus Services upon RIMP activation

BUS STOP 08121

Somerset Rd | Opposite 313 @ Somerset | via Exit A

7|14|16|36|65|77|106|111|123|124|128|143|162|162M|167|171|174
|175| 190|700|700A|972

BUS STOP 09038

Orchard Rd | Opposite 313@Somerset | via Exit B

7|14|16|65|106|111|123|175|

BUS STOP 09037 (staggered)

Orchard Rd | The Heeren | via Exit B

36|77|124|128|143|162|162M|167|171|174|190|700|700A|972

Places of Interest

Places of Interest	Via	Places of Interest	Via
Indian High Comm	Exit A	Peranakan Place	Exit B
Killiney Post Office	Exit A	The Centrepoint	Exit B
National Youth Ctr	Exit A	The Heeren	Exit B
Orchard NPC	Exit A	Orchard Central	Exit B
Skate Park	Exit A	313@Somerset	Exit B
TripleOne Somerset	Exit A	Kaplan	Exit B
Winsland House	Exit A	Pan Pacific Suites	Exit B
Cineleisure Orchard	Exit B	Al-Falah Mosque	Exit B
Holiday Inn Orchard	Exit B	Killiney Kopitiam	Exit A
Hotel Grand Central	Exit B	Orchard Grand Court	Exit A
Concorde Hotel S'pore	Exit B	Paragon Shopping Ctr	Exit B
Meritus Mandarin	Exit B	UOL Building	Exit B
Orchard Plaza	Exit B	Orchard Shopping Ctr	Exit B
Orchard Point	Exit B	The Comcentre	Exit A
Grand Park Orchard	Exit B		

Somerset Station(NS23)

Train service has been disrupted and we are working to restore normal service as quickly as possible. We apologise for any inconvenience caused.

Alternative Transport

Bus Services from Somerset to:

Ang Mo Kio Station (NS16)	#Bus stop 08121 (Exit A): 162
Bayfront Station(DT16/CE1)	#Bus stop 09038 (Exit B): 106
Bedok Station (EW5)	#Bus stop 09038 (Exit B): 7, 14, 16
Bishan Station (NS17/CC15)	#Bus stop 08121 (Exit A): 128*
Boon Keng Station (NE9)	#Bus stop 09038 (Exit B): 65
Boon Lay Station (EW27)	#Bus stop 08121 (Exit A): 174
Botanic Gardens Station (CC19)	#Bus stop 08121 (Exit A): 171
Bras Basah Station (CC2)	#Bus stop 09037 (Exit B): 36 #Bus stop 09038 (Exit B): 7, 14, 16, 106, 111, 175
Bugis Station (EW12/DT14)	#Bus stop 09038 (Exit B): 7, 175
Bukit Batok Station (NS2)	#Bus stop 08121 (Exit A): 77, 106, 174
Buona Vista Station (EW21/CC22)	#Bus stop 08121 (Exit A): 106, 111
Caldecott Station (CC17)	#Bus stop 08121 (Exit A): 162, 167
Changi Airport Station (CG2)	#Bus stop 09037 (Exit B): 36
Chinatown Station (NE4/DT19)	#Bus stop 09037 (Exit B): 36, 124, 124A*, 143, 190
Choa Chu Kang Station (NS4/BP1)	#Bus stop 08121 (Exit A): 190
City Hall Station (NS25/EW13)	#Bus stop 09037 (Exit B): 36, 77, 128*, 162, 162M, 167, 171, 700, 700A* #Bus stop 09038 (Exit B): 14, 16, 106, 111
Clarke Quay Station (NE5)	#Bus stop 09037 (Exit B): 124, 190
Clementi Station (EW23)	#Bus stop 08121 (Exit A): 7, 14, 106, 175
Commonwealth Station (EW20)	#Bus stop 08121 (Exit A): 111, 123

Dakota Station (CC8)	#Bus stop 09038 (Exit B): 7, 16
Dhoby Ghaut Station (NS24/NE6/CC1)	#Bus stop 09037 (Exit B): 36, 77, 124, 124A*, 128*, 162, 162M, 171, 174, 190, 700, 700A*, 972 #Bus stop 09038 (Exit B): 7, 14, 16, 65, 106, 111, 175
Dover Station (EW22)	#Bus stop 08121 (Exit A): 14, 106
Esplanade Station (CC3)	#Bus stop 09037 (Exit B): 36, 77, 128*, 162, 162M, 167, 171, 700, 700A* #Bus stop 09038 (Exit B): 14, 16, 106, 111
Eunos Station (EW7)	#Bus stop 09038 (Exit B): 7
Farrer Park Station (NE8)	#Bus stop 09038 (Exit B): 65
Farrer Road Station (CC20)	#Bus stop 08121 (Exit A): 174
Harbourfront Station (NE1/CC29)	#Bus stop 09037 (Exit B): 143 #Bus stop 08121 (Exit A): 65
Haw Par Villa Station (CC25)	#Bus stop 09037 (Exit B): 14 #Bus stop 08121 (Exit A): 175
Holland Village Station (CC21)	#Bus stop 08121 (Exit A): 7, 106
Jurong East Station (NS1/EW24)	#Bus stop 09037 (Exit B): 143
Kallang Station (EW10)	#Bus stop 09038 (Exit B): 7, 175
Kembangan Station (EW6)	#Bus stop 09038 (Exit B): 7
Labrador Park Station (CC27)	#Bus stop 09037 (Exit B): 143 #Bus stop 08121 (Exit A): 175
Lavender Station (EW11)	#Bus stop 09038 (Exit B): 7, 175
Little India Station (NE7)	#Bus stop 09038 (Exit B): 65
MacPherson Station (CC10)	#Bus stop 09038 (Exit B): 65
Marina Bay Station (NS27/CE2)	#Bus stop 09038 (Exit B): 106
Marymount Station (CC16)	#Bus stop 08121 (Exit A): 162, 162M, 167
Mountbatten Station (CC7)	#Bus stop 09038 (Exit B): 14, 16
Newton Station (NS21)	#Bus stop 08121 (Exit A): 124, 128*, 143, 162, 162M, 167, 171
Nicoll Highway Station (CC5)	#Bus stop 09038 (Exit B): 14, 16
Novena Station (NS20)	#Bus stop 08121 (Exit A): 124, 143, 162, 162M, 167
Outram Park Station (EW16/NE3)	#Bus stop 09037 (Exit B): 124, 124A*, 143
Orchard Station (NS22)	#Bus stop 08121 (Exit A): 972
Pasir Panjang Station (CC26)	#Bus stop 09037 (Exit B): 143 #Bus stop 08121 (Exit A): 175

Paya Lebar Station (EW8/CC9)	#Bus stop 09038 (Exit B): 7
Promenade Station (DT15/CC4)	#Bus stop 09037 (Exit B): 36, 77, 171, 700A* #Bus stop 09038 (Exit B): 106, 111
Queenstown Station (EW19)	#Bus stop 08121 (Exit A): 111
Raffles Place Station (NS26/EW14)	#Bus stop 09037 (Exit B): 128*, 162, 167, 700
Redhill Station (EW18)	#Bus stop 08121 (Exit A): 111
Sembawang Station (NS11)	#Bus stop 08121 (Exit A): 167
Tampines Station (EW2)	#Bus stop 09038 (Exit B): 65
Tanah Merah Station (EW4)	#Bus stop 09038 (Exit B): 14
Tanjong Pagar Station (EW15)	#Bus stop 09037 (Exit B): 128*, 162, 167, 700 #Bus stop 09038 (Exit B): 106
Telok Blangah Station (CC28)	#Bus stop 09037 (Exit B): 143
Tiong Bahru Station (EW17)	#Bus stop 09037 (Exit B): 123 #Bus stop 08121 (Exit A): 16
Toa Payoh Station (NS19)	#Bus stop 08121 (Exit A): 143
Yio Chu Kang Station (NS15)	#Bus stop 08121 (Exit A): 128*, 162, 162M
Yishun Station (NS13)	#Bus stop 08121 (Exit A): 171

* Bus service that operates at certain timings only. Check bus stop information board for details.

All public bus services at this location are free during Train Service Disruption.

Taxi Services:

Nearest Taxi Stand:	Exit B; 313 Shopping centre taxi stand
Taxi Booking Service Hotlines:	SMRT Taxis - 6555 8888 Comfort Taxi - 6552 1111 Trans Cab - 6555 3333 Premier Taxis - 6363 6888



For information on integrated transportation services, please contact TransitLink Hotline at 1800-225 5663. You can also contact SMRT Customer Relations Centre at 1800-336 8900.

有关地铁及巴士路线询问，请拨热线 1800-225 5663 向通联有限公司联络。您也可以联络 SMRT 客户联系中心热线号码 1800-336 8900。

Queue points for free shuttle bus service / special taxi service for student taking major examinations / free regular bus service / bus stops in the vicinity of the station – Somerset

